

Review of RFID Based Attendance System

Snehal V. Baviskar, Prof. D.D.Dighe

1. Snehal V. Baviskar, M.E.Student, Department of E&TC, MCERC Eklahare, Nashik, Maharashtra, India

2. prof. D.D. Dighe, HOD, Department of E&TC, MCERC Eklahare, Nashik, Maharashtra, India

ABSTRACT

RFID means Radio Frequency Identification. It is a wireless identification technique which has become very popular these days. It is used for smart system that can be used to identify, monitor secure and do object inventory by the use of radio frequency. This technology is also used in Bank locker security system, Library Management System etc. This technique is safe, secure, faster and easy to use with lower overheads in contrast with the other conventional techniques such as bar code, biometrics etc. It has two components i.e. RFID tag and RFID reader. RFID reader is the device capable of reading and recalling information stored inside the RFID tags. This paper presents a design of an Automatic Attendance System for both students and professor with parent notification sent via GSM and it also gives report about their test marks through SMS process. This project is to simplify attendance recorder system by using RFID. This paper reviews some of these monitoring systems and proposes an RFID based student attendance system.

Keywords: - RFID (Radio frequency identification); RFID Reader; RFID Tags; ARM7 controller; GSM and Student Attendance system.

1. INTRODUCTION

Today in most institution professors take attendance by calling out names or passing a sheet of paper. Both way have respective drawbacks. For this reason college needs to create a system to monitor students attendance and report it to their parents automatically and it also gives report about their test marks through SMS process. This project is to simplify attendance recorder system by using RFID.

Radio frequency identification (RFID) refers to the use of radio frequency wave to identify and track the tag apply into an object or a living thing. It is a wireless means of communication that use electromagnetic and electrostatic coupling in radio frequency portion of the spectrum to communicate between reader and tag through a variety of modulation and encoding scheme. Radio Frequency Identification (RFID) is the combination of radio frequency and microchip technologies to create a smart system that can be used to identify, secure ,monitor and do object inventory. At their simplest, RFID systems use tiny chips called tags that contain and transmit some piece of identifying information to an RFID reader, a device that in turn can interface with computers.

In the system of RFID Based Student Attendance System with Notification to Parents Using GSM, the passive type RFID reader is used whose maximum range of detection is around 10cm. It operates at frequency of 125 kHz and 12V power supply. and take attendance of the students. The users only need to place their RFID tag on the RFID reader to take attendance. They do not need to go through the long catalogue to look for their name. Hence, it is a very time efficient system. Attendance will be taken if the encoded tagged ID scanned, matches the tagged ID stored in the memory. Otherwise, an error message will be displayed.

In recent years, RFID is one of the automatic identification technologies. There is a wide research and development in this area trying to take maximum advantage of this technology, and in coming years many new applications and research areas will continue to appear. RFID system has been successfully applied to different areas as diverse as transportation, health-care, agriculture, and hospitality industry to name a few. RFID is also brings about some

concerns, mainly the security and privacy of those who work with or use tags in their everyday life which is proposed in. RFID is used to uniquely identify tagged objects or people. RFID systems have been widely used in many application areas such as inventory control, product tracking through manufacturing and assembly, parking lot access and control, Automatic Toll Collection System (ATCS), Bank Locker Security System, Library Management system (LMS), Attendance Management System etc. as discussed.

The aim of this paper is to monitor student's attendance by using RFID for administration. Notification will be sent to parents as well as school's/college authority in case of absence of students and faculty in the class and it also gives report about their test marks through SMS process.

The rest of the paper is discussed as follows: section II describes in literature review, section III describes brief RFID technology, section IV discusses the system design and finally conclusion is discussed in section V.

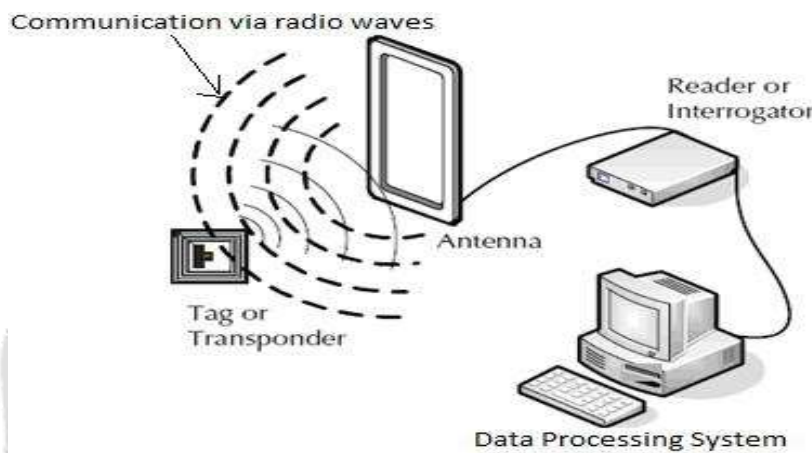


Fig. 1. RFID system components

II. Literature Review:

The use of Radio-frequency identification (RFID) technology in automated electronic environment and for tracking objects has been widely researched upon by researchers and deployed by various organizations as part of their automation systems. Zhang Yuru, Chen Delong and Tan Liping, April, 2013, suggested, The Research and Application of College Student Attendance System based on RFID Technology. Combined with the actual situation of college students class attendance system, the design of student attendance system nodes based on RFID has been proposed. In this paper, the hardware node of system and the develop processes of related application have been detailed presentation. The designed system not only can improve the work efficiency, but also can save human and material resources[2]. Sumita Nainan, Romin Parekh and Tanvi Shah, January 2013, suggested that —RFID Technology Based Attendance Management System. The proposed framework can give another, precise, and less bulky method for taking understudy participation in school and switch the worldview of understudy's address participation checking in classroom. An ease and cheap RFID Based Authentication System model have effectively created. The model of the framework can give a few advantages over the customary strategy for taking participation. This framework will help in programmed capacity of participation and guardians will be informed in instance of non attendance. In this framework utilizing the AVR controller, guarantees quick operation, cost viability and low power utilization[3]. Ankita Agrawal and Ashish Bansal, —Online Attendance Management System Using RFID with Object Counter says that, The Student Attendance System using Radio Frequency Identification technology with object counter will significantly improve the current manual process of student attendance recording and tracking system, especially in a university environment. The system promotes a fully-automated approach in capturing the student attendance and monitoring the student in the university campus. The attendance taken is secure and accurate. The system is user-friendly with easily accessible switches and communication ports. Attendance can be stored and retrieved[4].

III. RADIO FREQUENCY IDENTIFICATION

RFID stands for Radio Frequency Identification. RFID is a means of identifying a person or object using Radio Frequency Transmission. RFID is used to collect information automatically by radio frequency data communication between a mobile object and an RFID reader to identify and track them. They are most commonly referred to as reader and tag respectively. The RFID system is shown in fig.1. There are Tags and Reader in the system. A typical reader is a device that has one or more antennas that emit radio waves and receive signals back from the tag. To retrieve the data stored on an RFID tag, a reader is needed. RFID is used to read or write information on a tag and passing that information to a system for storage and processing.

Generally, RFID system consists of 2 parts Interrogator and Transponders. Interrogator and Transponder are also known as RFID Reader and RFID Tag respectively.

A. RFID Reader

RFID Reader is a scanning device that uses the antenna to realise the tags that are in its contiguity. It transmits signals at certain frequencies. RFID readers are usually ON, continuously transmitting radio energy and awaiting any tags that enter their field of operation. EM 18 RFID Reader is shown in fig. 2. EM 18 RFID reader is the device capable of reading and recalling information stored inside the RFID tags. There are two types of RFID readers, the active and the passive RFID readers.



Fig 2. EM 18 RFID Reader

Active RFID reader can detect an active RFID tag at few meters line of Sight while passive RFID reader can only detect passive RFID tag at a few centimeters away from the reader. It operates at frequency of 125 kHz and 12V power supply [2]. The effective detection range of the reader is around 10 cm from the antenna. The RFID reader used in the system is a low cost reader for reading passive RFID tags.

B. RFID Tags

RFID Tag is an IC chip that has unique hexadecimal or electronic product code (EPC) contained in it. Here —UNIQUEI refers to each and every code word of the tag and is independent of other code word. The tag acts as a Key that is capable of opening a particular locks [10]. So, it is also named as RFID key. The sequence is a numeric serial, which is stored in the RFID memory. The microchip is available inside RFID tag which is shown in below fig. 3. The microchips contain minute circuitry and an embedded silicon chip. Each tag can store a maximum of 2KB of information in the microchips. The tag memory can be permanent or re-writable, which can be re-programmed electronically by the reader multiple times. Tags are designed specific to an application and the environment it is proposed in.

There are three types of RFID tags which are active, passive, and semi-passive. Active tags are active in nature i.e. they do not require any external source, they have their own in-built battery. It can transmit high frequencies so it can be detected at a longer range. Passive tags are passive in nature i.e. they don't have any battery source built in

them. They draw their power from the electromagnetic field generated by the RFID reader. They have no active transmitter and rely on altering the RF field from the transceiver in a way that the reader can detect.

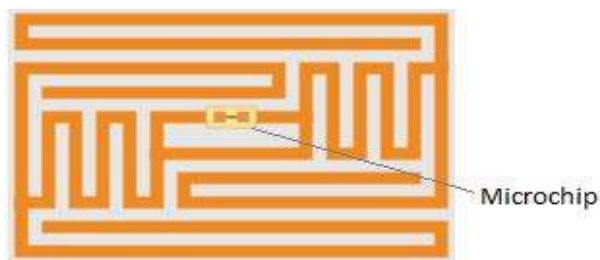


Fig. 3. RFID tags

They transmit low frequencies so that can be detected up to few meters of distance. Tags are available in various shapes and sizes which are shown in fig. 4. A Semi-Passive tag exists, which has the features of both Active and Passive tags. Semi-Passive Tags have their own power source that powers the microchip only. They have no transmitter and as with Passive tags they rely on altering the RF field from the Transceiver to transmit their data. The different types of RFID Tags [11] are shown in table 1.

| Feature | Passive | Active | Semi-Passive |
|---------------|------------------------------|--|---|
| Read Range | Short (Up to 10cm) | Long (Up to 100m) | Long (Up to 100m) |
| Battery | No | Yes | Yes |
| Life validity | Up to 20 years | Between 5-10 Years | Up to 10 Years |
| Storage | 128 bytes read/write | 128 Kbytes read/write | 128 Kbytes read/write |
| Cost | Cheap | Very Expensive | Expensive |
| Application | Attendance Management System | Monitor the condition of fresh produce | Measurement of temperature periodically |

TABLE I. Features of types of RFID Tags

Tags operate on Low frequency (LF) (30 KHz-300 KHz), High frequency (HF) (3MHz-30MHz), Ultra high frequency (UHF) (300MHz-3GHz) and Microwave (2.4 GHz-5GHz) [12].



Fig. 4. Different shapes of RFID tags

IV. PROPOSED SYSTEM

In order to implement the RFID Based Student Attendance System with Notification to Parents Using GSM and it also gives report about their test marks through SMS process., the hardware and software are discussed below.

A. HARDWARE DESIGN

This system consists of automatic attendance system for both students and professor. While entering the class room both the student and professor have to mark their attendance using their RFID cards. This attendance will be forwarded to a central computer after processing it through the microcontroller where it will be stored. If a student is absent in the class then notification will be sent to his/her parents.

The architecture of the system is shown in fig. 5. This system consists of a tag affixed on identity card to communicate wirelessly with a reader, in order to retrieve the tag's identity. RFID is used to take the attendance of the student. Student information is stored in the RFID tag and this information is read by the RFID reader. The ARM7 microcontroller takes input from the RFID reader, processes it and sends it to both PC and the GSM module through MAX232 for storing the attendance and for sending SMS through the GSM module.

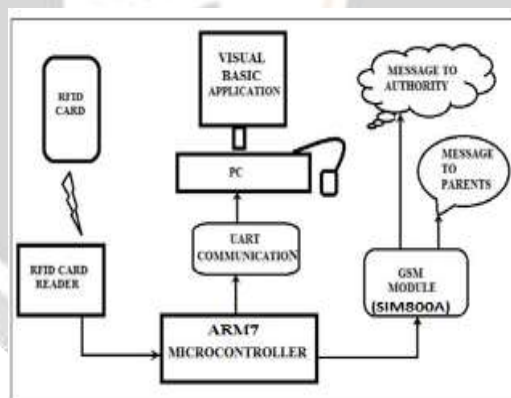


Fig. 5. Block diagram of the system

ARM 7 is a versatile processor designed for mobile devices and other low power electronics. This processor architecture is capable of up to 130 MIPS on a typical 0.13um process. The ARM7TDMI processor core implements ARM architecture. This one is cost effective. The MAX232 IC is used to convert the TTL/CMOS logic levels to RS232 logic levels during serial communication of microcontrollers with PC.

GSM (Global System for Mobile communications) is used to send SMS to student's parents about their absence in class. GSM SIM 800a is an open, digital cellular technology used for transmitting mobile voice and data services. GSM operates in the 900MHz and 1.8GHz bands. GSM supports data transfer speeds of up to 14.4 kbps, allowing the transmission of basic data services such as SMS.

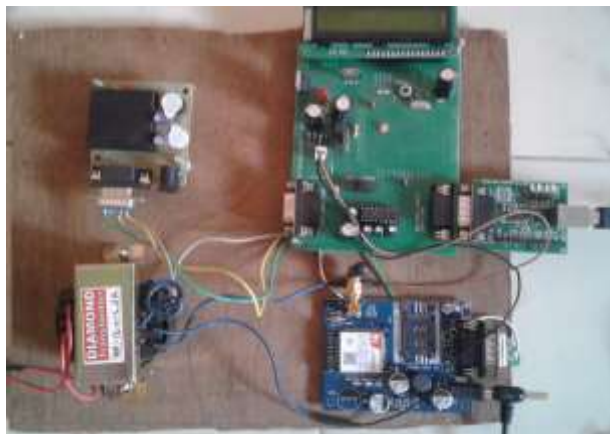


Fig. 6. Hardware of the system

The hardware of the system is shown in fig. 6. This system consists of EM 18 RFID Reader, GSM SIM 800A module, Max 232 and ARM7 microcontroller with LCD. Working of the system is discussed below. When students scan the RFID tags to RFID reader, data will be sent to ARM7 microcontroller through Max232 and it will be displayed on LCD. Microcontroller sends the data to database in the PC for matching student details and information is stored in the database. After matching, PC sends notification to controller and it will be displayed on LCD _present' After 10 minute, those students are absent, PC sends message through Max232 to microcontroller. Microcontroller sends the message to Parents through GSM. fill up the test marks for system & it also gives report about their test marks through SMS process.

B.SOFTWARE DESIGN

Direction flow of the program is shown in fig. 7. 'C' sharp has been used as the programming language.

The proposed system has been explained with the help of following steps:-

- Step 1-Initialise RFID Reader
- Step 2-Initialise LCD
- Step 3-Initialise UART
- Step 4-Scan RFID tags
- Step 5-Send scanned of RFID data to microcontroller
- Step6-Using microcontroller perform the filtering operation to remove unwanted field and extract student's id.
- Step 7-Search student tags id in permanent database with scanned RFID students tags.
- Step7.1-Search student's id, if found go to step 8 else go to step 4.
- Step8-Compare detected students tag, id_s, date and time with class time table and if match found then go to step 9 else go to step 4.
- Step9- Check person type and mark the presence
- Step10- Repeat step 4 to step 9 for all row of RFID data.
- Step 11- After 10 min check for present student and if student is Absent then send message to parents that your child is absent

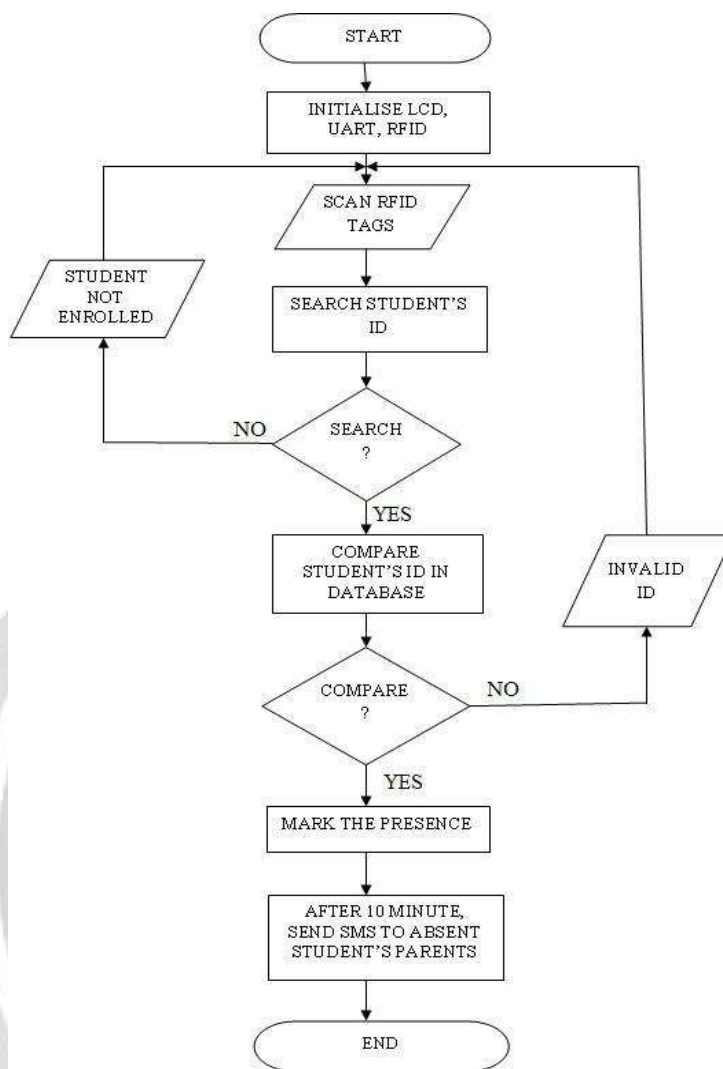


Fig.7. Directional flow of the system

V. CONCLUSIONS

The proposed system can provide a new, accurate, and less cumbersome way of taking student attendance in school and shift the instance of student's lecture attendance monitoring in classroom. A low cost RFID Based Attendance System prototype has been successfully developed. The prototype of the system can provide several benefits over the conventional method of taking attendance. This system will help in automatic storage of attendance and parents will be notified in case of absence and it also gives report about their test marks through SMS process. In this system using the ARM7 controller, ensures fast operation, cost effectiveness and low power consumption.

VI. ACKNOWLEDGEMENT

I Snehal V. Baviskar would like to thank everyone, including: parents, teachers, family, friends, and in essence, all sentient beings for their help and support this paper would not have been possible. Especially, I dedicate my acknowledgment of gratitude toward my mentor and Co-author Prof. D. D. Dighe for his guidance and support.

VII. REFERENCES

- [1]. T.S. Lim, S.C. Sim and M.M. Mansor, —RFID Based Attendance Systeml 2009 IEEE Symposium on Industrial Electronics and Applications (ISIEA 2009), Kuala Lumpur, Malaysia, October 4-6, 2009.
- [2]. Zhang Yuru, Chen Delong and Tan Liping, —The Research and Application of College Student Attendance System based on RFID Technologyl International Journal of Control and Automation Vol. 6, No. 2, April, 2013.
- [3]. Sumita Nainan, Romin Parekh and Tanvi Shah,—RFID Technology Based Attendance Management Systeml IJCSI International Journal Of Computer Science Issues, Vol. 10, Issue 1, No 1, January 2013.
- [4]. Ankita Agrawal and Ashish Bansal,—Online Attendance Management System Using RFID with Object Counterl International Journal of Information and Computation Technology, ISSN 0974-2239 Volume 3, © International Research Publications House, Number 3 (2013), pp. 131-138.
- [5]. Er. Zatin Singhal and Er. Ashish Gupta, —RFID: unique identification technique for attendance systeml IJREAS Volume 2, Issue 2, ISSN: 2249-3905, February 2012Reference 2(Font-10, justify)
- [6]. Francisco Silva, Victor Filipe and António Pereira, —Automatic control of students' attendance in classrooms using RFIDl, IEEE, The Third International Conference on Systems and Networks Communications,978-0-7695-3371-1/08 \$25.00,© 2008Reference 3(Font-10, justify)
- [7]. R.Ramani, S.Valarmathy, S. Selvaraju and P.Niranjan, —Bank Locker Security System based on RFID and GSM Technologyl International Journal of Computer Applications (0975 – 8887) Volume 57– No.18, November 2012.
- [8]. Pranoti Salunke, Poonam Malle, Kirti Datir and Jayshree Dukale,—Automated Toll Collection System Using RFIDl IOSR Journal of Computer Engineering (IOSR-JCE) e-ISSN: 2278 0661, p- ISSN: 2278-8727Volume 9, Issue 2 (Jan. - Feb. 2013), PP 61-66.
- [9]. Dhanalakshmi M and Uppala Mamatha, —RFID Based Library Management Systeml Proceedings of ASCNT, CDAC, Noida, India,2009, pp. 227 – 234.
- [10]. Aysha Qaiser and Shoab A Khan, —Automation of Time and Attendance using RFID Systemsl 2nd International Conference on Emerging Technologies, Peshawar, Pakistan, November 2006.13-14.
- [11]. Rajan Patel, Nimisha Patel and Mona Gajjar,—Online Students Attendance Monitoring System in Classroom Using Radio Frequency Identification Technology: A Proposed System Framework International Journal of Emerging Technology and Advanced Engineering, (ISSN 2250-2459, Volume 2, Issue 2, February 2012).
- [12]. Zatin Singhal and Rajneesh Kumar Gujral,—Anytime Anywhere-Remote Monitoring of Attendance System based on RFID using GSMNetworkl International Journal of Computer Applications (0975 – 8887) Volume 39– No.3, February 2012.